

Volkswagen Golf MK7

Front and rear Parktronic system assembly manual
v. 1.0.

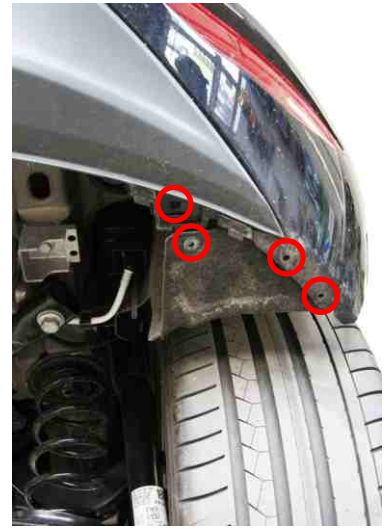
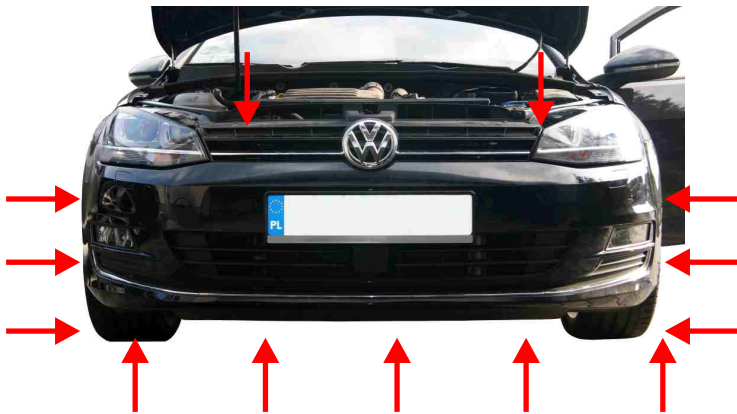


The bundle includes:

3 pcs	Beams
1 pc	PDC Module
8 pcs	Black mat sensors
8 pcs	Holder
2 pcs	Buzzer
1 pc	Button
1 pc	Electric diagram
1 pc	Coding manual

1

Dismantle the front and rear bumper and then remove the bolts visible on the photo.



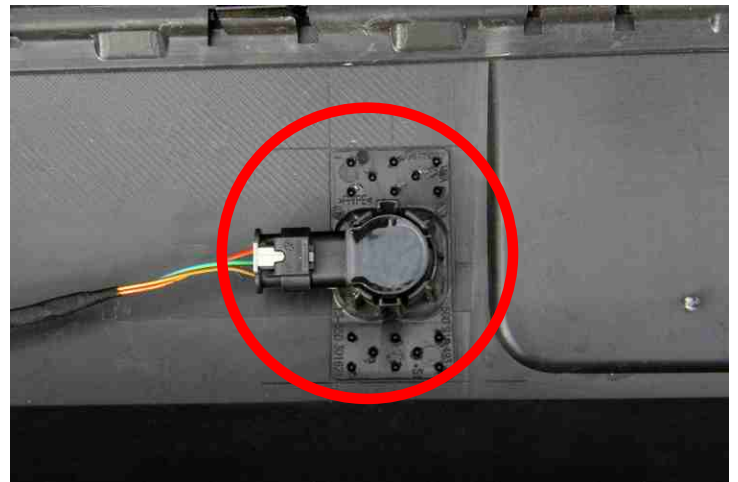
2

After dismantling the bumpers find the places where holes should be drilled and attach handles which hold the parking sensors.

A



B



3

Dismantle the handle for opening the front hood and loosen the masking skirt. Assemble PDC module in the indicated place, connect GND and prepare the installation for connecting +12V and CAN data bus.



4

Connect orange wire (can high) to pin number **18** in CAN gateway. Connect brown wire (can low) to pin number **8** in CAN gateway.



5

Pull the beam through to PDC button and assemble the button as shown on the photo. Connect wires to socket 12V:
brown - GND
grey - illumination

A



B



C



Attach to the beam of sensors and assemble the front bumper.

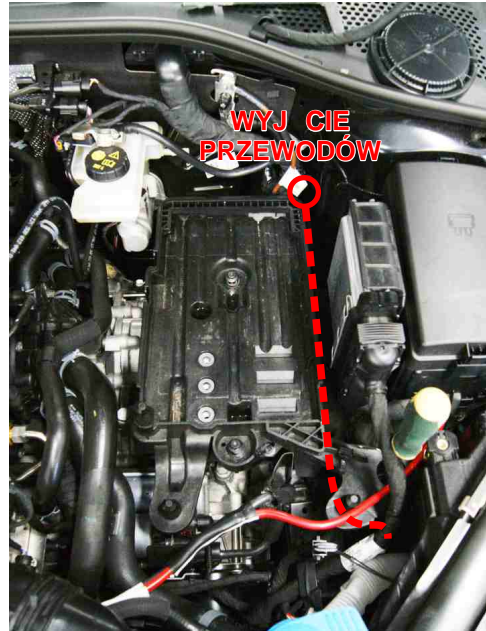
B



6

Pull the beam responsible for the front sensors through to the front.

A



7

After assembling the front bumper pull the beam through to the back by dismantling the front and rear left door sill.



8

Disassemble the rear left side. Assemble speaker and lead the beam to grommet outside the car.



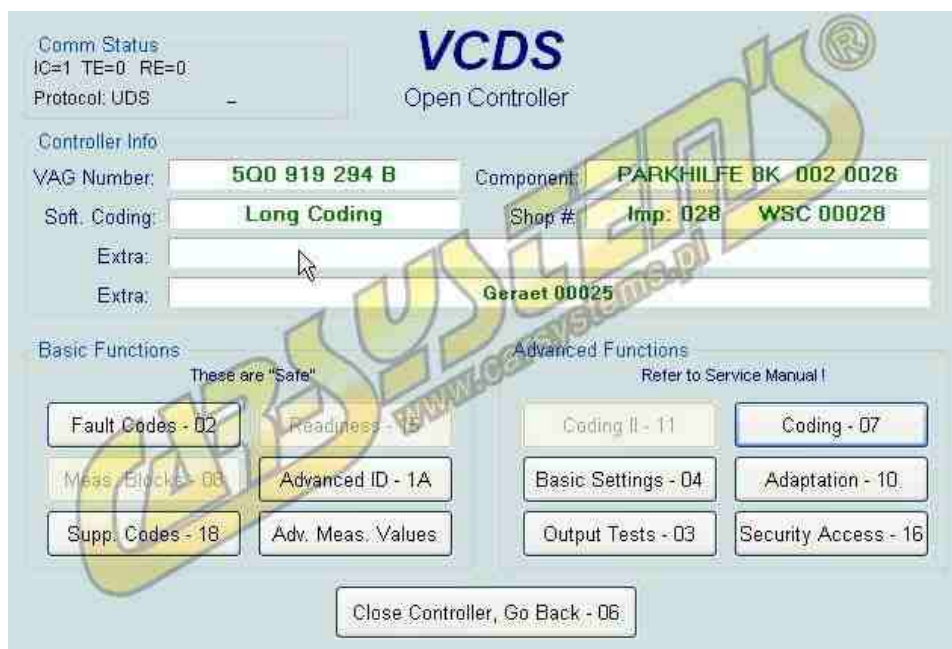
9

After pulling the beam outside attach the rear sensors and assemble the rear bumper.



10

PDC Module coding.



11

1) **0031051011**

2) Continue with [Arrow down] on keyboard / [ESC] will close LCode

3) **00 31 05 10 11**

Byte 1 Binary: **00110001**

4) Bit 0 Mute Function active

Bit 4 Limited Operation active/enabled

Bit 5 Vehicle Path Display active/enabled

12

1) **0031051011**

2) Continue with [Arrow down] on keyboard / [ESC] will close LCode

3) **00 31 05 10 11**

Byte 2 Binary: **00000101**

4) Bit 0 Optical Parking System (OPS) active

Bit 2 Display and Operating Protocol (BAP) active

Bit 4-5

00	Rear View/Environmental Camera NOT installed
00	Rear View/Environmental Camera NOT installed
10	Camera Type: Rear View Camera (RVC) installed
20	Camera Type: Environmental Camera installed
30	Camera Type: Rear View Camera (RVC) installed (Japanese Market)

13

1) **0031051011**

2) Continue with [Arrow down] on keyboard / [ESC] will close LCode

3) **00 31 05 10 11**

Byte 3 Binary: **00010000**

4) Bit 0-1 **00 Trailer Hitch NOT installed**

Bit 3 Adaptive Cruise Control / Distance Regulation active installed

Bit 4 Automatic Parking Aid Activation active enabled

14

1) **0031051011**

2) Continue with [Arrow down] on keyboard / [ESC] will close LCode

3) **00 31 05 10 11**

Byte 3 Binary: **00010000**

4) Bit 0-1 **00 Trailer Hitch NOT installed**

00 Trailer Hitch NOT installed

01 Trailer Hitch installed (manually removable)

02 Trailer Hitch installed (electrically operable)

Bit 3 Adaptive Cruise Control / Distance Regulation active installed

Bit 4 Automatic Parking Aid Activation active enabled

15

1) 0031051111

2) Continue with [Arrow down] on keyboard / [ESC] will close LCode-

3) 00 31 05 11 11

Byte 4 Binary: 00010001

4) Bit 0 Parking Aid active installed

Bit 4 Automatic Transmission installed

Bit 6 Start-Stop Function enabled

Bit 7 Automatic Rear Lid installed

Vehicle	Product
Golf MK7 5K0	OPS PDC No park assist

Parts	Part Number
MK7 OPS Kit	Car -systems MK7 OPS kit
Control Module	5Q0 919 294 BZ01
Control Module T18 Connector	5Q0 972 718 A
Control Module T26 Connector	TBA
Push Button	5G1 927 238 EWZU
Push Button T10 Connector	6R0 973 930

Connections

OPS Module - T26	Connection	Notes
2	1	Front Buzzer
10	2	Front Buzzer
15	1	Rear Buzzer
9	2	Rear Buzzer
23	CAN Low	Orange/Black at CAN Gateway
24	CAN High	Orange/Black at CAN Gateway
14	Ignition Feed	+15
18	Pin 1 on sensors	Split feed to all 4 rear sensors
22	Pin 3 on sensors	Split feed to all 4 rear sensors
6	2	Rear Left Sensor
20	2	Rear Centre Left Sensor
7	2	Rear Centre Right Sensor
21	2	Rear Right Sensor
13	Ground	Connect to Chassis
17	6	Warning light in Push button
16	3	Push button

OPS Module -T18	Connection	Notes
11	2	Front Left Sensor
3	2	Front Centre Left Sensor
12	2	Front Centre Right Sensor
4	2	Front Right Sensor
14	Pin 1 on sensors	Split feed to all front sensors
10	Pin 3 on sensors	Split feed to all front sensors

Push button - T10	Connection	Notes
1	Ground	Connect to Chassis
2	Illumination	Connect to Grey wire at Cigarette Lighter
3	T26/16 OPS Module	Parking Aid Button
6	T26/17 OPS Module	Parking Aid Warning Light

Coding

19 CAN Gateway - Installation List - 10 Park/Steer Assist

5F Infotainment - Adaptation - set all to active

Vehicle function list BAP-parking_assist_0x0A

Vehicle menu operation-menu_display_pdc

Vehicle menu operation-menu_display_pdc_over_threshold_high