

Volkswagen Golf VI

Assembly manual of rear - view camera with module
v. 1.0.



The bundle includes:	
1 pc	Camera built-in VW emblem
1 pc	Drain pipe
1 pc	5N0907441 module
1 pc	Plug&Play wire

1

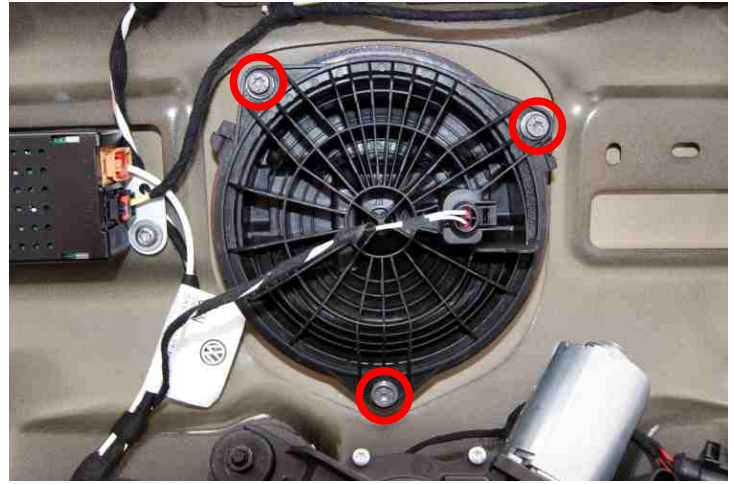
Dismantle the rear trunk lid covering.

A



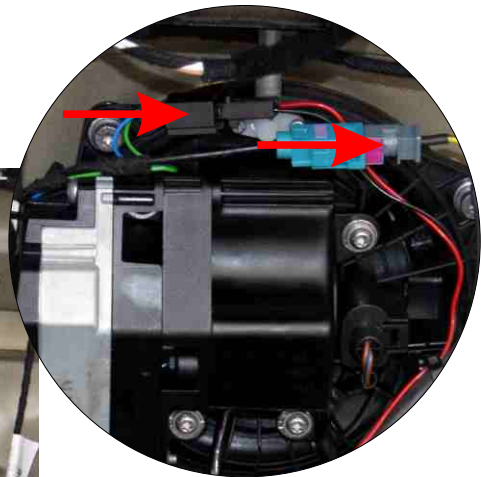
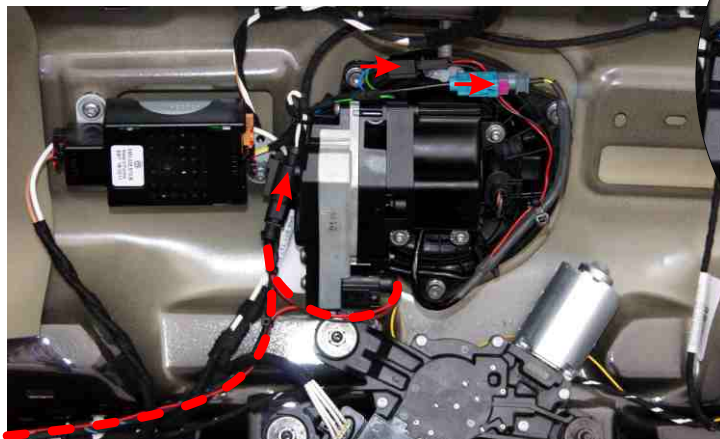
Remove the emblem and screw on the camera in the same way.

B



2

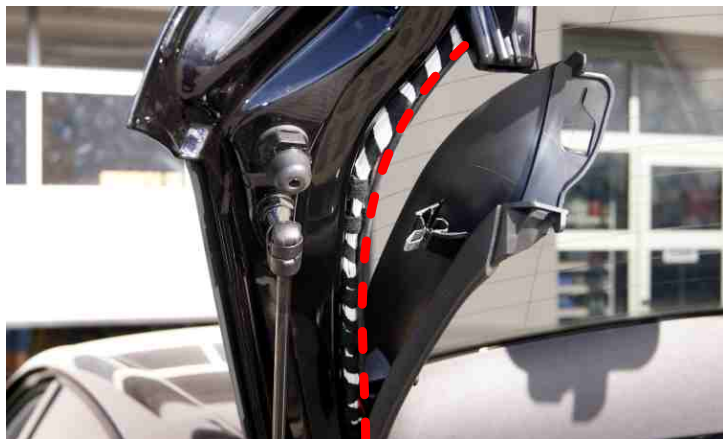
Connect wires from the beam to the rear-view camera as shown on the photos and lead the wires.



3

A

Pull the power and video wires on the left side of the trunk lid towards a grommet.

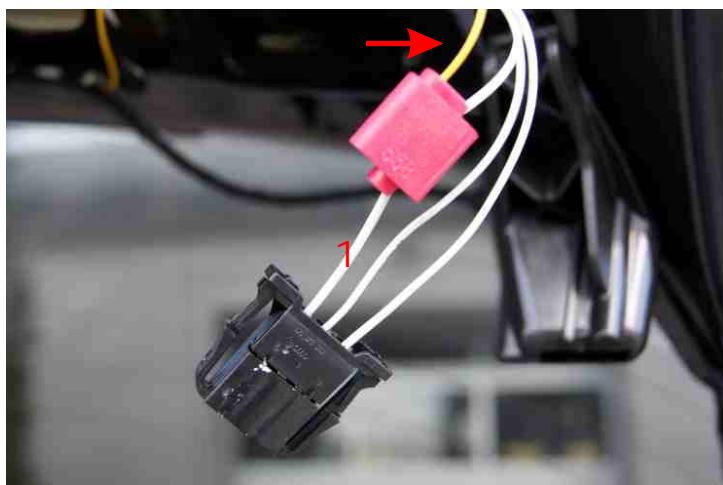


B



4

Yellow wire from the beam connect to rear light. First pin in the chip next to the lamp.



5

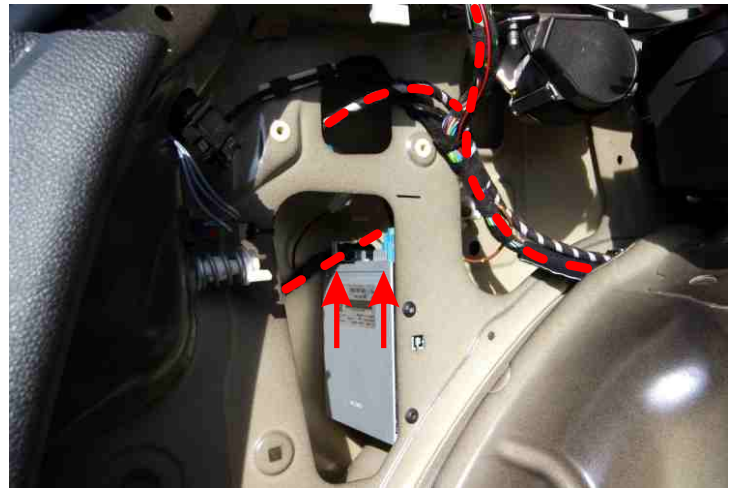
Remove screws indicated on the photo and take off the left side of the rear pillar. Pull the beams on the left side downwards to the place where the camera module will be installed.



6

A

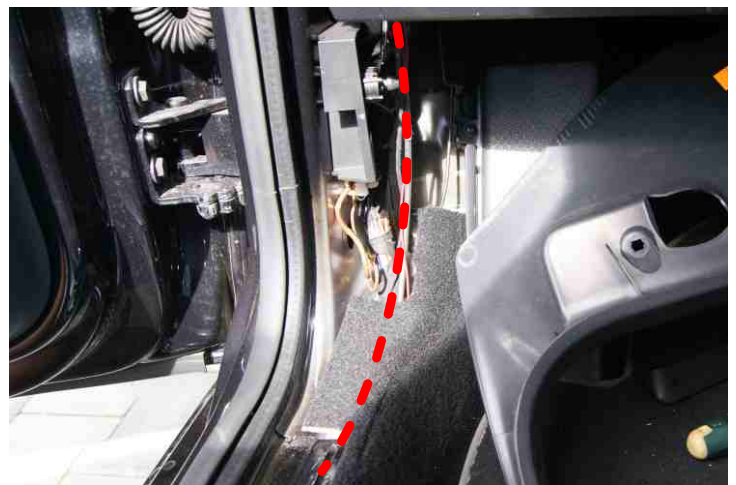
After installing the module clip the chops indicated on the photo and lead the beam to the front as shown on the following photos.



B



C



7

Dismantle the radio. Begin with removing the masking frame by lifting it gently. After the frame is loosened remove the fixing screws.



8

A

After taking out the radio and pulling the beam clip the 28-pin chip into the socket.

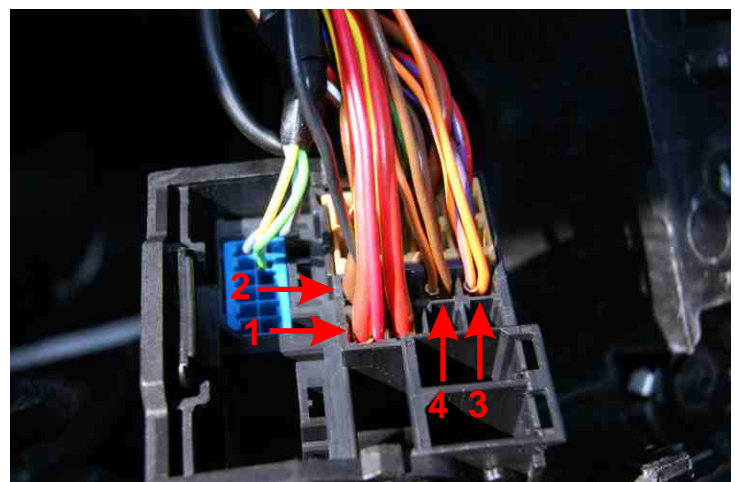


B

Solder 4 wires from the beam:

- 1 - red wire +12V connect to pin 15 in quadlock
- 2 - red wire GND connect to pin 12 in quadlock
- 3 - orange wire can H connect to pin 9 in quadlock
- 4 - brown wire can L connect to pin 10 in quadlock

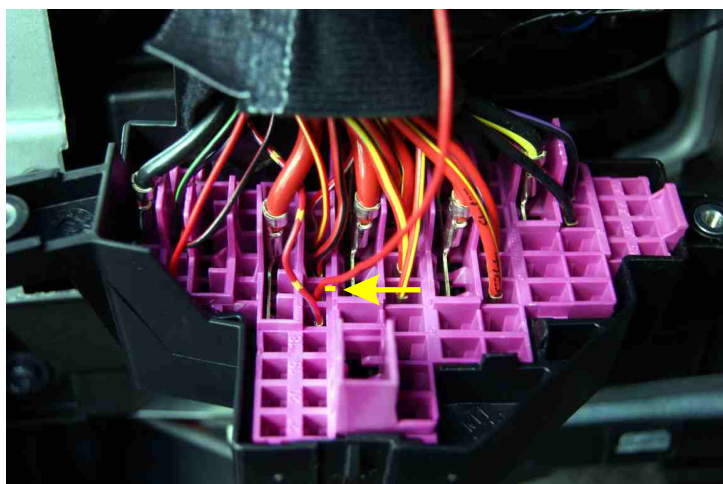
After soldering and connecting all wires assemble everything in reverse order.



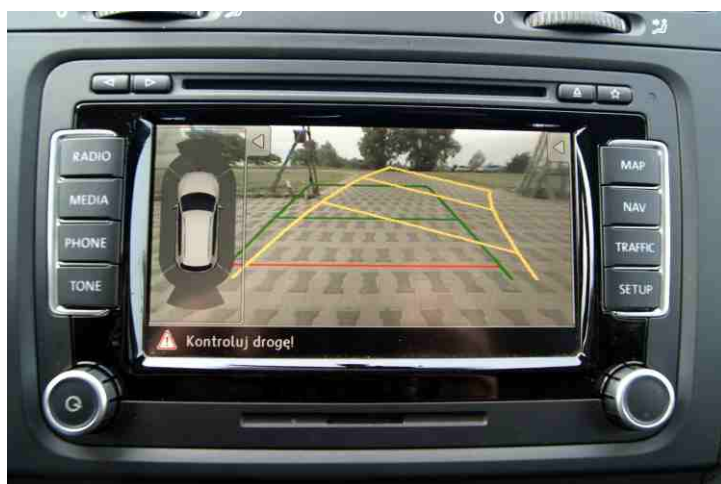
9

Connect the camera power to the fuse box so that +12V is fixed.

A



B

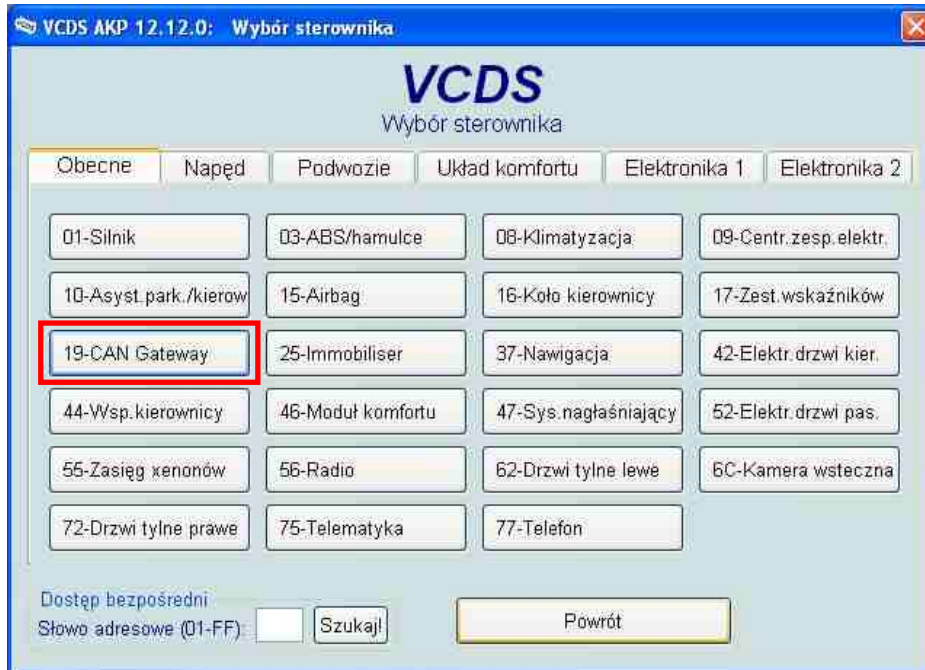


C



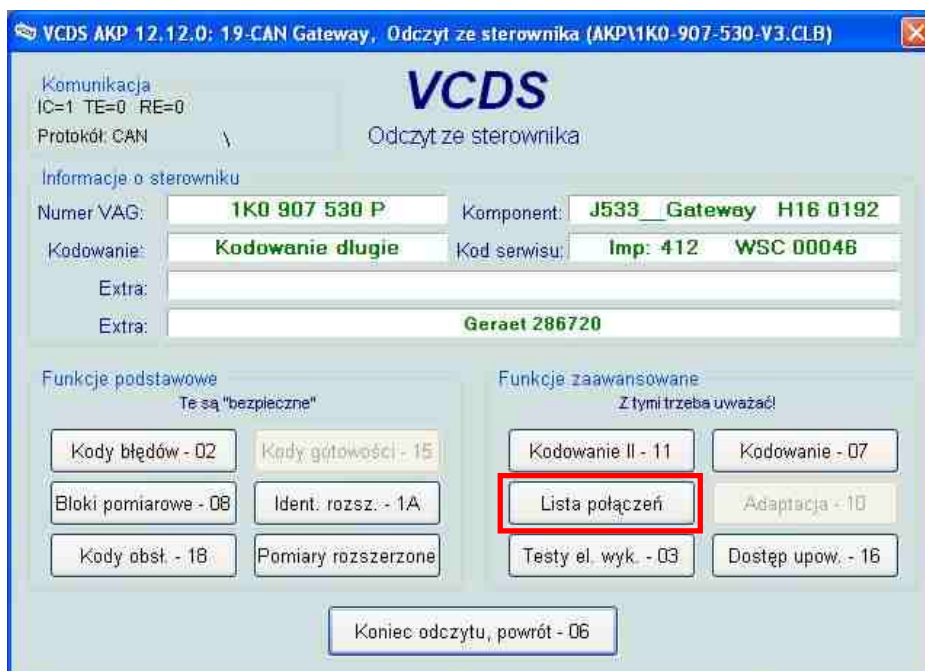
10

Using diagnostic equipment VCDS open block 19 - Can Gateway



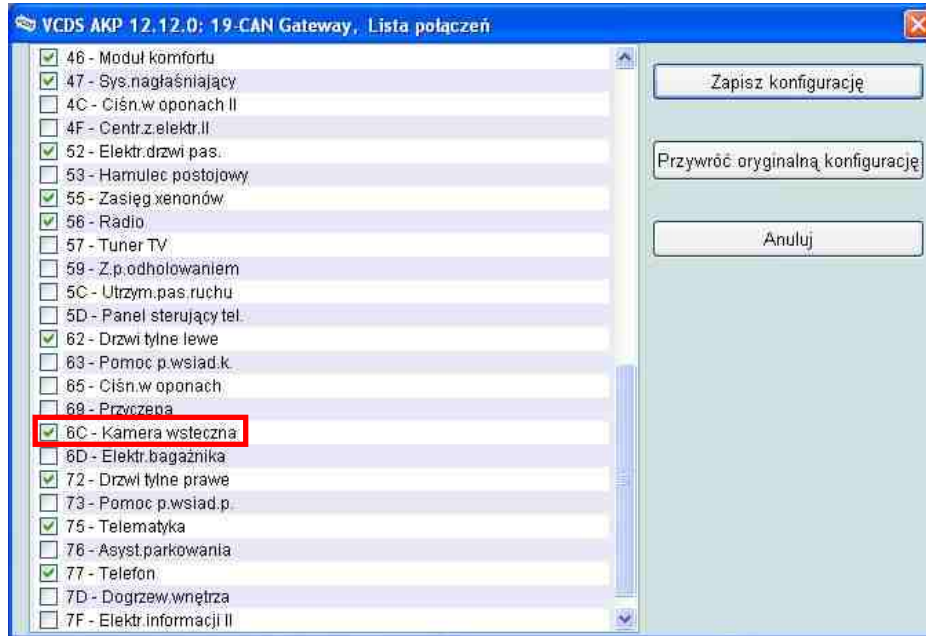
11

Next open block *List of Connections*



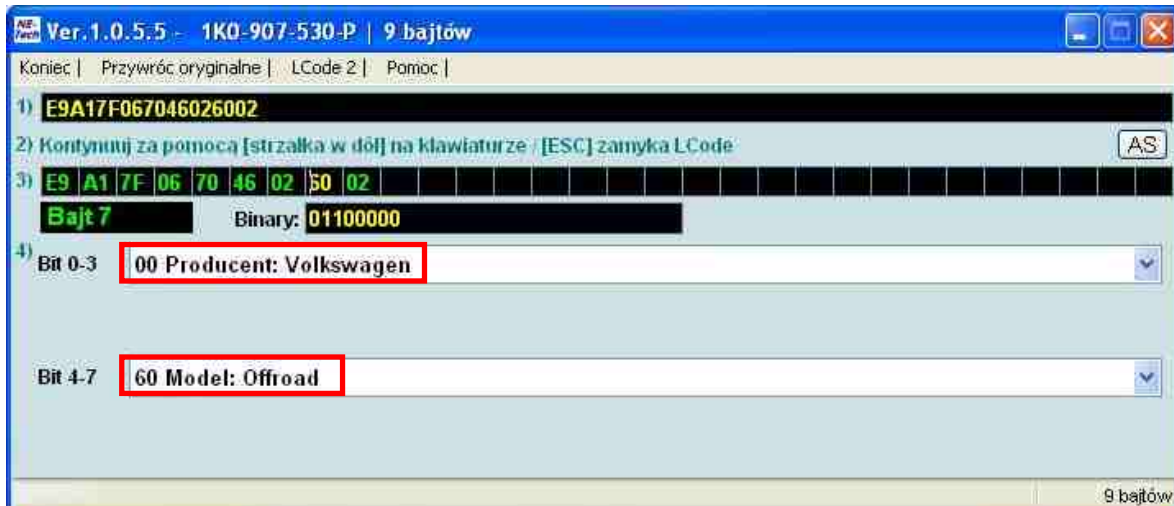
12

Mark position 6C - Backup-Cam (rear-view camera) on the list and confirm.



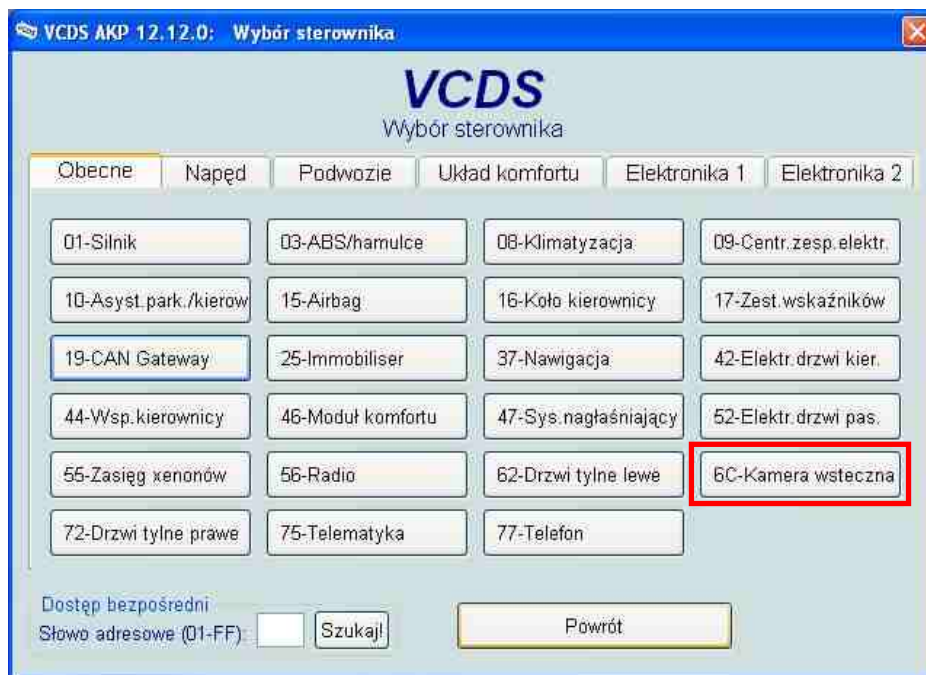
13

In the same module open *block Coding* -> *Coding Assistant*
Find byte with information on the producer
00 Manufacturer: Volkswagen
Change the module for: 60 Model: Offroad.
Confirm coding.



14

Go to block 6C - Rear-view camera

**15**

Open block Coding --> Coding Assistant

Code the module: 0000110

Confirm coding.

Delete errors in both blocks 6C and 19.